

SBLEC Power Terminals Fixing Accessory

Data Solutions



CERTIFICATIONS



FEATURES

Attach power terminal fixing accessory to back of power terminals for direct panel mounting or DIN rail end cap mounting

Easily clips onto DIN rail or mounts to panel with screws

Halogen free

SPECIFICATIONS

Table 1/2

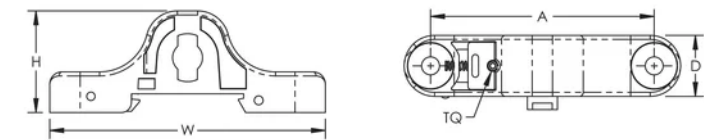
Catalog Number	Article Number	Material	Flammability Rating	Depth (D)	Height (H)	Width (W)
SBLEC	561138	Thermoplastic	UL® 94V-0	19mm	32mm	86mm

Table 2/2

Catalog Number	Article Number	A	Torque (TQ)	Unit Weight
----------------	----------------	---	-------------	-------------

SBLEC	561138	70mm	0.56N·m	0.01kg
-------	--------	------	---------	--------

DIAGRAMS



WARNING

nVent products shall be installed and used only as indicated in nVent's product instruction sheets and training materials. Instruction sheets are available at www.nvent.com and from your nVent customer service representative. Improper installation, misuse, misapplication or other failure to completely follow nVent's instructions and warnings may cause product malfunction, property damage, serious bodily injury and death and/or void your warranty.



Our powerful portfolio of brands:

CADDY

ERICO

HOFFMAN

ILSCO

SCHROFF

TRACHTE