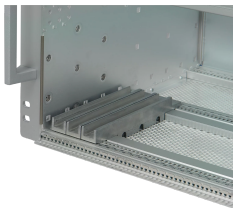


# EuropacPRO Guide Rails to Accomodate Conduction Cooled Assemblies

## Power Utilities



The adapter is the interface between a subrack and the conduction cooled assemblies (CCAs).

### CERTIFICATIONS



### FEATURES

Adapter to hold conduction cooled assemblies (CCAs) in subracks

### SPECIFICATIONS

Table 1/2

Catalog Number	Type	Package Quantity	Groove Width	Length	Material	Product Family
24566-004	Conduction Cooled Assembly VPX	1	12.34	160 mm	Aluminum	EuropacPRO, RatiopacPRO, RatiopacPRO AIR, CompacPRO, PropacPRO

CatalogNumber	Type	Package Quantity	Groove Width	Length	Material	Product Family
24566-005	Conduction Cooled Assembly CompactPCI	1	12.34	160 mm	Aluminum	EuropacPRO, RatiopacPRO, RatiopacPRO AIR, CompacPRO, PropacPRO

Table 2/2			
Catalog Number	Product Type	Works With	Package Unit
24566-004	Guide Rail	Subracks, Cases	Pair
24566-005	Guide Rail	Subracks, Cases	Pair

## ADDITIONAL PRODUCT DETAILS

Suitable for heavy and rugged horizontal rails.

## WARNING

nVent products shall be installed and used only as indicated in nVent's product instruction sheets and training materials. Instruction sheets are available at [www.nvent.com](http://www.nvent.com) and from your nVent customer service representative. Improper installation, misuse, misapplication or other failure to completely follow nVent's instructions and warnings may cause product malfunction, property damage, serious bodily injury and death and/or void your warranty.



Our powerful portfolio of brands:

**CADDY   ERICO   HOFFMAN   ILSCO   SCHROFF   TRACHTE**