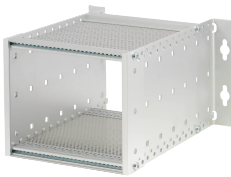


EuropacPRO 19" Subrack Kit for Backplane, Wall Mount, Unshielded

Power Utilities

Subrack for assembly to a wall or cabinet panel for backplane mounting without rear hood.



CERTIFICATIONS



FEATURES

Subrack with side panel type L ("light")

For backplane mounting

Internal and external dimensions in accordance with the IEC 60297-3-101 and IEEE 1101.1 standards

IP 20, in accordance with IEC 60529

Supplied as space-saving flat-pack

Modifications such as cutouts, different finishes or dimensions available

Aluminum construction

Horizontal rails type "light"

SPECIFICATIONS

Table 1/2

Catalog Number	Rack Height	Depth	Package Quantity	For Mounting	Board Depth	Handle Included
24563-107	3 U	205 mm	1	Backplane	160 mm	No

Table 2/2

Catalog Number	Mounting	Complies With	EMC Shielding	Product Type	Rack Width	Static Load
24563-107	Wall	IEC 60297-3-103	No	Subrack/Chassis	28 HP	2.5 kgf

ADDITIONAL PRODUCT DETAILS

EMC version on request.

Individual configuration: broad range of variants in height, width and depth; guide rails for a wide variety of applications; interior options; accessories and mounting material.

WARNING

nVent products shall be installed and used only as indicated in nVent's product instruction sheets and training materials. Instruction sheets are available at www.nvent.com and from your nVent customer service representative. Improper installation, misuse, misapplication or other failure to completely follow nVent's instructions and warnings may cause product malfunction, property damage, serious bodily injury and death and/or void your warranty.



Our powerful portfolio of brands:

CADDY ERICO HOFFMAN ILSCO SCHROFF TRACHTE