

# Flange Mount Disconnect, MCF



The mild steel flange mount disconnect floor standing enclosure range, MCF, is available off the shelf in various sizes. It is equipped with a predefined cut-out, which reduces machining time, on the right hand door, that can be matched with most of the common switches in the market. The enclosure configurations that may be created comply with door interlocking and main switch regulations.

## INDUSTRY STANDARDS

UL 508A Listed; Type 12; File No. E92044

cUL Listed per CSA C22.2 No.0, No.0.4, No.14, No.94; Type 12; File No. E92044

NEMA/EEMAC Type 12

IEC 62208 IP55

CE, UK CA, UL, EAC

## FEATURES

Material: Frame: 1.5 mm painted steel. Doors: 2 mm painted steel. Rear, roof and side panels: 1.5 mm painted steel. Mounting plate: 3 mm galvanized steel. Bottom plates: 1 mm galvanized steel.

Frame: Seam welded reversed open profiles with 25 mm hole pattern, according to DIN 43660. Including integrated external hole pattern.

Door: Mounted with four hinges. Including door frame with 25 mm hole pattern. Door can not be reversed. Flange door: Surface mounted with hinges, locked from the inside, including universal cut-out.

Rear panel: Fitted by M6 torx screws. Standard facilities for rear door mounting.

Side panels: Supplied as an accessory.

Roof panel: Removable.

Lock: Lock, left door: Espagnolette 4-point locking system. Does not interfere with the enclosure inner space. Standard double-bit lock with 3 mm insert. Standard inserts, cylinders, lift handles and T-handles are available as accessories. Lock, right door: Top and bottom lock with double-bit for easy opening of the door. Double-bit 3 mm insert and 90° movement. Other inserts are available as an accessory.

Bottom plates: Consists of three pieces

Mounting plate: Double folded and adjustable in depth by steps of 25 mm, with the MPD02 accessory. Supplied, attached on the outside of the enclosure packaging.

Earthing: All panels are earthed through their fittings and are equipped with a separate earthing stud.

Finish: RAL 7035 structured powder coating.

Protection: Complies with IP 55 | TYPE 12 | IK 10.

Mounting requirements: Standard delivery ready for combined installation. Sides of the group of combined enclosures must be closed with side panels SPM. The interlocking kit, FMD, is included in standard delivery and compatible with the

most popular electrical switched. To complete the interlocking system for bayed configurations, add FMA, FMB and FMS.

Delivery: Frame with fitted doors, rear panel, roof panel, bottom plates, mounting plate and door frame. Delivery also includes earthing bolts. Delivered on a pallet which is identical to the width of the enclosure to allow baying without removal. All packing material is recyclable.

SPECIFICATIONS

- Body Thickness:

1.5mm
- Door Thickness:

2mm
- Color:

Light Gray
- Material:

Mild Steel
- Finish:

Powder Coated
- Color Code:

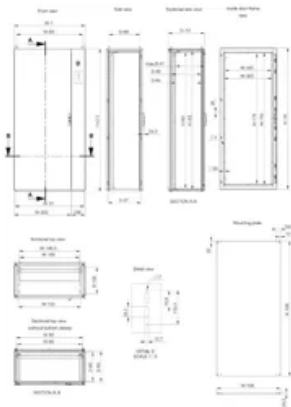
RAL 7035

| Table 1/1      |                |            |           |           |                       |
|----------------|----------------|------------|-----------|-----------|-----------------------|
| Catalog Number | Article Number | Height (H) | Width (W) | Depth (D) | Mounting Plate Height |
| MCF20085R5     | MCF20085R5     | 2000mm     | 800mm     | 500mm     | 1894mm                |
| MCF18085R5     | MCF18085R5     | 1800mm     | 800mm     | 500mm     | 1694mm                |
| MCF18105R5     | MCF18105R5     | 1800mm     | 999mm     | 500mm     | 1694mm                |
| MCF20105R5     | MCF20105R5     | 2000mm     | 999mm     | 500mm     | 1894mm                |
| MCF20086R5     | MCF20086R5     | 2000mm     | 800mm     | 600mm     | 1894mm                |
| MCF18084R5     | MCF18084R5     | 1800mm     | 800mm     | 400mm     | 1694mm                |

ADDITIONAL PRODUCT DETAILS

SPM mild steel side panels must be ordered separately to close the cabinets (individual or assembled), in order to maintain the protection rating.

DIAGRAMS



## WARNING

---

nVent products shall be installed and used only as indicated in nVent's product instruction sheets and training materials. Instruction sheets are available at [www.nvent.com](http://www.nvent.com) and from your nVent customer service representative. Improper installation, misuse, misapplication or other failure to completely follow nVent's instructions and warnings may cause product malfunction, property damage, serious bodily injury and death and/or void your warranty.



Our powerful portfolio of brands:

**CADDY   ERICO   HOFFMAN   ILSCO   SCHROFF   TRACHTE**