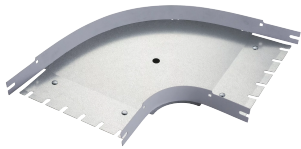


WBT Cable Tray Transitions, PreForm 90deg Elbow, 50.8X304.8 mm, Black

CATALOG NUMBER

WBTR902X12BA



The nVent CADDY WBT Performance Cable Tray PreForm Elbow features a radius junction with a pre-galvanized base and interlocking polymer side walls that save time with consistent installation. The PreForm Elbow 90° is a revolutionary solution for seamless intersections ensuring clean engineering precision and effortless attachment without cutting or configuring. Due to its unique design, this offering provides up to 60% reduction in labor and time compared to traditional methods while maintaining flexibility and cost-effectiveness in tray pathway retrofits.

FEATURES

Labor savings up to 60%

Maintains UL classification throughout installation

PRODUCT ATTRIBUTES

Material: Steel

Finish: Pregalvanized

Color: Black

Height: 50.8 mm

Width: 304.8 mm

Length: 858.67mm

Angle: 90 °

Unit Weight: 1.814 kg

WARNING

nVent products shall be installed and used only as indicated in nVent's product instruction sheets and training materials. Instruction sheets are available at www.nvent.com and from your nVent customer service representative. Improper installation, misuse, misapplication or other failure to completely follow nVent's instructions and warnings may cause product malfunction, property damage, serious bodily injury and death and/or void your warranty.

North America

+1.800.753.9221

Option 1 – Customer Care

Option 2 – Technical

Support

Europe

Netherlands:

+31 800-0200135

France:

+33 800 901 793

Europe

Germany:

800 1890272

Other Countries:

+31 13 5835404

APAC

Shanghai:

+ 86 21 2412 1618/19

Sydney:

+61 2 9751 8500



Our powerful portfolio of brands:

CADDY

ERICO

HOFFMAN

ILSCO

SCHROFF

TRACHTE

