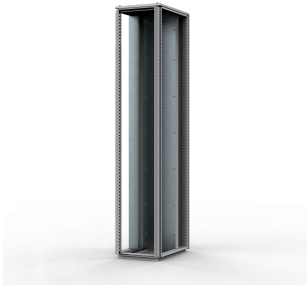


# Separation Plates For Cable Section For Power Distribution, MSPM



Separation plate to segregate the front space in the cable section from the busbar space. It includes the profiles in which the separation plate is fixed, and in which the fixation cables profiles MSCFR/MSCFS must be fixed too.

## FEATURES

Description: Separation plate to segregate the front space in the cable section from the busbar space. It includes the profiles in which the separation plate is fixed, and in which the fixation cables profiles MSCFR/MSCFS must be fixed too.

Material: 3 mm reinforced polycarbonate, and 1.5 mm galvanized steel.

Delivery: 2 vertical profiles to fix the separation plate and mounting material.

Two vertical profiles to fix the separation plate and mounting material

SPECIFICATIONS

- Thickness:

3mm
- Color:

Gray
- Material:

Polycarbonate
- Finish:

Smooth

Table 1/1					
Catalog Number	Height	Width	Depth	Enclosure Material	Quick Ship
MSPM1804	1800mm	400mm	65mm	Polycarbonate	No
MSPM1806	1800mm	600mm	65mm	Polycarbonate	No
MSPM2004	2000mm	400mm	65mm	Polycarbonate	No
MSPM2006	2000mm	600mm	65mm	Polycarbonate	No
MSPM2204	2200mm	400mm	65mm	Polycarbonate	No
MSPM2206	2200mm	600mm	65mm	Polycarbonate	No

ADDITIONAL PRODUCT DETAILS

If cable section is installed between 2 outgoing sections, MSPMxxxxE separation plates must be used.

WARNING

nVent products shall be installed and used only as indicated in nVent's product instruction sheets and training materials. Instruction sheets are available at [www.nvent.com](http://www.nvent.com) and from your nVent customer service representative. Improper installation, misuse, misapplication or other failure to completely follow nVent's instructions and warnings may cause product malfunction, property damage, serious bodily injury and death and/or void your warranty.



Our powerful portfolio of brands:

**CADDY   ERICO   HOFFMAN   ILSCO   SCHROFF   TRACHTE**