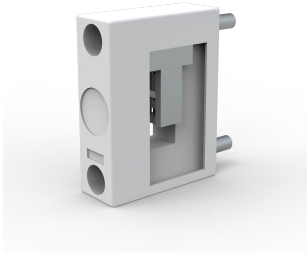


# PE/N Busbar Support, WO60

1-pole busbar support, for a wide range of busbar sizes.



## FEATURES

Description: PE/N-support. Individually mountable. N-PE connection easy to make.

Rated voltage: 690 V

Rated isolation voltage  $U_i$ : 1000 V

Rated surge voltage  $U_{imp}$ : 6 kV

Short circuit withstand: 14 kA (max 400 mm distance between supports)

SPECIFICATIONS

Table 1/1						
Catalog Number	Height	Width	Depth	Material	Finish	Color
01356	20mm	65mm	50mm	Plastic, Steel	Smooth	Light Gray
01601	20mm	164mm	50mm	Plastic, Steel	Smooth	Light Gray

WARNING

nVent products shall be installed and used only as indicated in nVent's product instruction sheets and training materials. Instruction sheets are available at [www.nvent.com](http://www.nvent.com) and from your nVent customer service representative. Improper installation, misuse, misapplication or other failure to completely follow nVent's instructions and warnings may cause product malfunction, property damage, serious bodily injury and death and/or void your warranty.



Our powerful portfolio of brands:

CADDY   ERICO   HOFFMAN   ILSCO   SCHROFF   TRACHTE