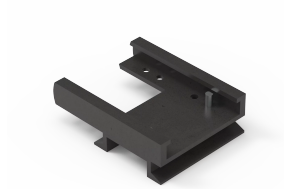


Mounting Rail, WO60

Mounting rails for busbar adapters.



FEATURES

Description: Mounting rail for busbar adapters.

Pack quantity: 10 pcs.

Approvals: CSA, UL, GL

SPECIFICATIONS

| Table 1/1 | | | | | | |
|----------------|--------|-------|-------|------------|--------|-------|
| Catalog Number | Height | Width | Depth | Material | Finish | Color |
| 32947 | 56mm | 45mm | 18mm | Mild Steel | Smooth | Black |
| 32948 | 56mm | 54mm | 18mm | Mild Steel | Smooth | Black |
| 32949 | 56mm | 63mm | 18mm | Mild Steel | Smooth | Black |
| 32950 | 56mm | 72mm | 18mm | Mild Steel | Smooth | Black |
| 32951 | 56mm | 81mm | 18mm | Mild Steel | Smooth | Black |

WARNING

nVent products shall be installed and used only as indicated in nVent's product instruction sheets and training materials. Instruction sheets are available at www.nvent.com and from your nVent customer service representative. Improper installation, misuse, misapplication or other failure to completely follow nVent's instructions and warnings may cause product malfunction, property damage, serious bodily injury and death and/or void your warranty.



Our powerful portfolio of brands:

CADDY ERICO HOFFMAN ILSCO SCHROFF TRACHTE