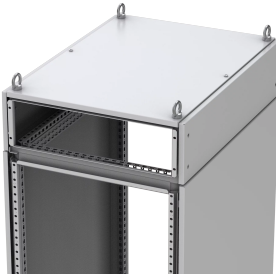


Front/Rear Top Frames For Floor Standing Enclosures, MCU



This frame creates additional space in the top and can be segregated from the enclosure. It has a universal hole pattern for mounting accessories easily.

FEATURES

Description: For cable entry and routing or for installation of a power distribution system. Fixed to the top of the enclosure by four M12 screws. Available in 200 mm and 300 mm heights. The enclosure roof plate CCR can be used to close the top. For lifting MCU together with an enclosure a separate lifting kit MCUK is needed.

Side panels: MCUP supplied as an accessory.

Material: Frame in 1.75 mm steel plate, panels in 1.35 mm steel plate.

Finish: RAL 7035 structured powder coating.

Protection: Complies with IP55.

Pack quantity: 1 piece with front and back panels including mounting accessories (without roof plate).

SPECIFICATIONS

Color: Light Gray
Finish: Powder Coated
Color Code: RAL 7035
Material: Steel

Table 1/1

Catalog Number	Height	Width	Depth	Enclosure Material	Quick Ship
MCU2046R5	200mm	400mm	600mm	Steel	No
MCU2048R5	200mm	400mm	800mm	Steel	No
MCU2065R5	200mm	600mm	500mm	Steel	No
MCU2066R5	200mm	600mm	600mm	Steel	No
MCU2068R5	200mm	600mm	800mm	Steel	No
MCU2085R5	200mm	800mm	500mm	Steel	No
MCU2086R5	200mm	800mm	600mm	Steel	No
MCU2088R5	200mm	800mm	800mm	Steel	No
MCU2105R5	200mm	1000mm	500mm	Steel	No
MCU2106R5	200mm	1000mm	600mm	Steel	No
MCU2108R5	200mm	1000mm	800mm	Steel	No
MCU2125R5	200mm	1200mm	500mm	Steel	No
MCU2126R5	200mm	1200mm	600mm	Steel	No
MCU2128R5	200mm	1200mm	800mm	Steel	No
MCU3048R5	300mm	400mm	800mm	Steel	No
MCU3066R5	300mm	600mm	600mm	Steel	No

Catalog Number	Height	Width	Depth	Enclosure Material	Quick Ship
MCU3068R5	300mm	600mm	800mm	Steel	No
MCU3086R5	300mm	800mm	600mm	Steel	No
MCU3088R5	300mm	800mm	800mm	Steel	No
MCU3106R5	300mm	1000mm	600mm	Steel	No
MCU3108R5	300mm	1000mm	800mm	Steel	No
MCU3126R5	300mm	1200mm	600mm	Steel	No
MCU3128R5	300mm	1200mm	800mm	Steel	No

WARNING

nVent products shall be installed and used only as indicated in nVent's product instruction sheets and training materials. Instruction sheets are available at www.nvent.com and from your nVent customer service representative. Improper installation, misuse, misapplication or other failure to completely follow nVent's instructions and warnings may cause product malfunction, property damage, serious bodily injury and death and/or void your warranty.



Our powerful portfolio of brands:

CADDY ERICO HOFFMAN ILSCO SCHROFF TRACHTE