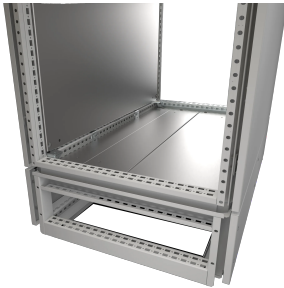


# Front/Rear Bottom Frames For Floor Standing Enclosures, PCU



This frame creates additional space in the bottom and can be segregated from the enclosure. It has a universal hole pattern for mounting accessories easily.

## FEATURES

Description: For fixing and routing of cables or mounting of busbar. Identical hole pattern to the enclosure's frame makes all relevant accessories (e.g. CLPF, CLPK, etc) possible to mount. Fixed to the base of the enclosure by M12 screws (provided).

Side panels: PCUP supplied as an accessory.

Material: Frame in 1.75 mm steel plate, panels in 1.35 mm steel plate.

Finish: RAL 7035 structured powder coating.

Protection: Complies with IP 55.

Pack quantity: 1 piece with front and back panels including mounting accessories. Add CBP for closing bottom opening.

SPECIFICATIONS

**Color:** Light Gray  
**Finish:** Plated  
**Color Code:** RAL 7035  
**Material:** Steel

Table 1/1					
Catalog Number	Height	Width	Depth	Enclosure Material	Quick Ship
PCU2046R5	200mm	400mm	600mm	Stainless Steel	No
PCU2048R5	200mm	400mm	800mm	Stainless Steel	No
PCU2066R5	200mm	599mm	600mm	Stainless Steel	No
PCU2068R5	200mm	599mm	800mm	Stainless Steel	No
PCU2086R5	200mm	800mm	600mm	Stainless Steel	No
PCU2088R5	200mm	800mm	800mm	Stainless Steel	No
PCU2106R5	200mm	999mm	600mm	Stainless Steel	No
PCU2108R5	200mm	999mm	800mm	Stainless Steel	No
PCU2126R5	200mm	1199mm	600mm	Stainless Steel	No
PCU2128R5	200mm	1199mm	800mm	Stainless Steel	No
PCU3046R5	300mm	400mm	600mm	Stainless Steel	No
PCU3048R5	300mm	400mm	800mm	Stainless Steel	No
PCU3066R5	300mm	599mm	600mm	Stainless Steel	No
PCU3068R5	300mm	599mm	800mm	Stainless Steel	No
PCU3086R5	300mm	800mm	600mm	Stainless Steel	No
PCU3088R5	300mm	800mm	800mm	Stainless Steel	No

Catalog Number	Height	Width	Depth	Enclosure Material	Quick Ship
PCU3106R5	300mm	999mm	600mm	Stainless Steel	No
PCU3108R5	300mm	999mm	800mm	Stainless Steel	No
PCU3126R5	300mm	1199mm	600mm	Stainless Steel	No
PCU3128R5	300mm	1199mm	800mm	Stainless Steel	No

## WARNING

nVent products shall be installed and used only as indicated in nVent's product instruction sheets and training materials. Instruction sheets are available at [www.nvent.com](http://www.nvent.com) and from your nVent customer service representative. Improper installation, misuse, misapplication or other failure to completely follow nVent's instructions and warnings may cause product malfunction, property damage, serious bodily injury and death and/or void your warranty.



Our powerful portfolio of brands:

CADDY   ERICO   HOFFMAN   ILSCO   SCHROFF   TRACHTE