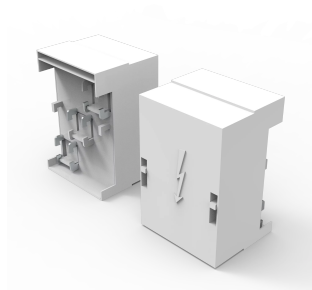


Connection Terminal Plate

Connection terminal plate for bigger cables.



FEATURES

Description: Connection terminal plate, 3-pole, with cover cap.

For busbars: 20, 25, 30 × 5, 10

Rated voltage: 690 V.

Width: 135

Pack quantity: 1 pc.

Approvals: GL

SPECIFICATIONS

Table 1/1						
Catalog Number	Height	Width	Depth	Enclosure Material	Product Family	Material
01199	150mm	135mm	100mm	Plastic	IEC General Accessories	Plastic
01753	150mm	135mm	100mm	Plastic	IEC General Accessories	Plastic
01754	150mm	135mm	100mm	Plastic	IEC General Accessories	Plastic

WARNING

nVent products shall be installed and used only as indicated in nVent's product instruction sheets and training materials. Instruction sheets are available at www.nvent.com and from your nVent customer service representative. Improper installation, misuse, misapplication or other failure to completely follow nVent's instructions and warnings may cause product malfunction, property damage, serious bodily injury and death and/or void your warranty.



Our powerful portfolio of brands:

CADDY ERICO HOFFMAN ILSCO SCHROFF TRACHTE