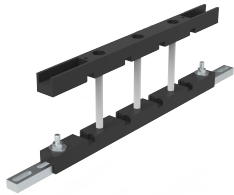


# Compact Busbar Support For Power Distribution, ECBS



This busbar support, ECBS, is available for one or two bars up to 80 x 5 mm or one bar up to 80 x 10 mm. The support can be mounted both horizontally and vertically. It is available off the shelf and tested according to IEC 61439.

## FEATURES

Description: Busbar support up to 1600A to be mounted horizontally or vertically. Mounts directly to the enclosure frame or with help of CLPF profiles. Available in single and double bar per phase for bar thickness 5 mm and only single bar per phase for bar thickness 10 mm, and width from 25 to 80 mm.

Working temperature: -40°C up to 130°C.

Material: Reinforced polyamide and steel. Halogen free.

Delivery: Busbar support with mounting material.

SPECIFICATIONS

Table 1/1						
Catalog Number	Enclosure Material	Product Family	Material	Finish	Color	Quick Ship
ECBS110TN	Mild Steel	Free-Standing	Polyamide, Steel	Smooth Matte	Black	No
ECBS205TN	Mild Steel	Free-Standing	Plastic, Mild Steel	Smooth		No

WARNING

nVent products shall be installed and used only as indicated in nVent's product instruction sheets and training materials. Instruction sheets are available at [www.nvent.com](http://www.nvent.com) and from your nVent customer service representative. Improper installation, misuse, misapplication or other failure to completely follow nVent's instructions and warnings may cause product malfunction, property damage, serious bodily injury and death and/or void your warranty.



Our powerful portfolio of brands:

CADDY   ERICO   HOFFMAN   ILSCO   SCHROFF   TRACHTE