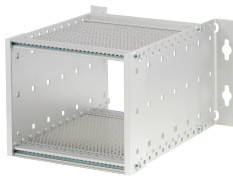


EuropacPRO 19" Subrack Kit for DIN Connector

Power Utilities



Subrack for assembly to a wall or cabinet panel for Din connector mounting without rear hood.

CERTIFICATIONS



FEATURES

Subrack with side panel type L ("light")

Internal and external dimensions in accordance with the IEC 60297-3-101 and IEEE 1101.1 standards

Supplied as space-saving flat-pack

Modifications such as cutouts, different finishes or dimensions available

IP 20, in accordance with IEC 60529

For connector mounting (DIN 41612, EN 60602-3)

Horizontal rails type "light"

Aluminum construction

SPECIFICATIONS

Table 1/2

Catalog Number	Product Type	Rack Height	Rack Width	Depth	For Mounting	Board Depth
----------------	--------------	-------------	------------	-------	--------------	-------------

24563-109	Subrack/Chassis	3 U	28 HP	205 mm	DIN Connector	160 mm
-----------	-----------------	-----	-------	--------	---------------	--------

Table 2/2

Catalog Number	EMC Shielding	Static Load	Handle Included	Mounting	Complies With	Package Quantity
24563-109	No	2.5 kgf	No	Wall	IEC 60297-3-103	1

ADDITIONAL PRODUCT DETAILS

EMC version on request.

Individual configuration: broad range of variants in height, width and depth; guide rails for a wide variety of applications; interior options; accessories and mounting material.

WARNING

nVent products shall be installed and used only as indicated in nVent's product instruction sheets and training materials. Instruction sheets are available at www.nvent.com and from your nVent customer service representative. Improper installation, misuse, misapplication or other failure to completely follow nVent's instructions and warnings may cause product malfunction, property damage, serious bodily injury and death and/or void your warranty.



Our powerful portfolio of brands:

CADDY ERICO HOFFMAN ILSCO SCHROFF TRACHTE