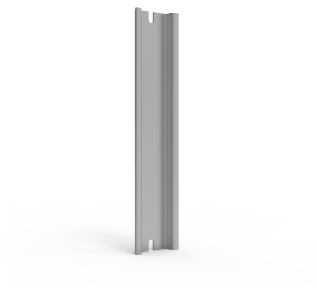


# Din rail 35x260, OABP/ OPCP

## CATALOG NUMBER

**DR352505E**



A ready to use DIN rail that facilitates both procurement and installation.

## FEATURES

Description: DIN rail 35 mm for OABP/OPCP boxes.

Material: Galvanized steel.

Pack quantity: 1 piece.

Ready to use rails ensure that both procurement and installation can be done efficiently reducing the labour time required

Note: DR3 can be mounted in both directions.

## PRODUCT ATTRIBUTES

Height: 300mm

Width: 300mm

Material: Galvanized Steel

Finish: Galvanized

Enclosure Material: ABS; Polycarbonate

## WARNING

nVent products shall be installed and used only as indicated in nVent's product instruction sheets and training materials. Instruction sheets are available at [www.nvent.com](http://www.nvent.com) and from your nVent customer service representative. Improper installation, misuse, misapplication or other failure to completely follow nVent's instructions and warnings may cause product malfunction, property damage, serious bodily injury and death and/or void your warranty.



Our powerful portfolio of brands:

**CADDY ERICO HOFFMAN ILSCO SCHROFF TRACHTE**