

# nVent LENTON Lock S-Series Shear Bolt Coupler, Coated



Coated reinforcing bar is used in place of plain reinforcing bars to protect against corrosion. Typical applications include bridges, parking structures, pavement, marine structures and repair work. nVent LENTON couplers and mechanical anchors are available in multiple coatings to meet specific job requirements.

## FEATURES

Requires no special bar end preparation such as sawing

Installs quickly and easily using simple, off-the-shelf hand tools

Bolt heads shear off when bolt torque is achieved, providing for simple visual inspection

Designed to work as a one-step transition/reducer

Rebar centering pin can be removed to allow the coupler to fully pass onto the reinforcing bar for applications such as closure pours

## SPECIFICATIONS

**Finish Standard:** ASTM® B695 Class 50 with Clear Trivalent Chromate Seal

**Finish:** Mechanical Galvanized

**Material:** Steel

Table 1/2

Catalog Number	Rebar Size, Metric	Rebar Size, US	Rebar Size, Canada	Diameter 1 (Ø1)	Diameter 2 (Ø2)	Length (L)
LL12S1MG	12 mm	#4	10M	29 mm	15 mm	99mm
LL16S1MG	14 mm, 16 mm	#5	15M	35 mm	19 mm	109mm
LL20S1MG	18 mm, 20 mm	#6	20M	44 mm	24 mm	153mm

CatalogNumber	Rebar Size, Metric	Rebar Size, US	Rebar Size, Canada	Diameter 1(Ø1)	Diameter 2(Ø2)	Length (L)
LL22S1MG	22 mm	#7		48 mm	28 mm	173mm
LL25S1MG	25 mm	#8	25M	54 mm	30 mm	173mm
LL28S1MG	28 mm, 30 mm	#9	30M	60 mm	34 mm	234mm
LL32S1MG	32 mm	#10		65 mm	38 mm	220mm
LL36S1MG	34 mm, 36 mm	#11	35M	72 mm	43 mm	286mm

Table 2/2

Catalog Number	Socket Width (SW)	Number of Bolts	Torque (TQ)	Unit Weight
LL12S1MG	13mm	4	110 N·m	0.44 kg
LL16S1MG	13mm	4	110 N·m	0.63 kg
LL20S1MG	13mm	6	205 N·m	1.31 kg
LL22S1MG	16mm	6	250 N·m	1.77 kg
LL25S1MG	16mm	6	340 N·m	2.32 kg
LL28S1MG	16mm	8	340 N·m	3.71 kg
LL32S1MG	21mm	6	750 N·m	4.07 kg
LL36S1MG	21mm	8	610 N·m	6.24 kg

**Designed to Meet:** AASHTO;ABNT NBR 8548:1984;ACI 318 Type 1 (125% Specified Yield);CAN/CSA - N287.2/.3/.4;IBC Type 1 (125% Specified Yield);US Army Corps of Engineers;ACI 318 Type 2-ASTM A706 Grade 60

## ADDITIONAL PRODUCT DETAILS

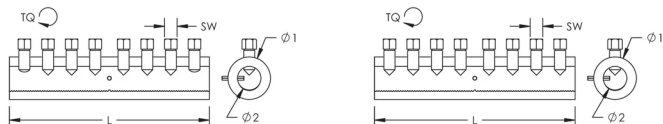
Bolt length may vary after the bolt heads are sheared off. Bolt heads are not required to be removed as long as the appropriate bolt torque is achieved.

When using an impact wrench, size the wrench for 2x the bolt torque. If using an air impact wrench, check the air pressure, torque rating and air flow requirements before starting installations.

Refer to complete installation instructions provided with the product or available at [nVent.com/LENTON](http://nVent.com/LENTON) prior to commencing installation.

## DIAGRAMS

---



## WARNING

---

nVent products shall be installed and used only as indicated in nVent's product instruction sheets and training materials. Instruction sheets are available at [www.nvent.com](http://www.nvent.com) and from your nVent customer service representative. Improper installation, misuse, misapplication or other failure to completely follow nVent's instructions and warnings may cause product malfunction, property damage, serious bodily injury and death and/or void your warranty.

### North America

+1.800.753.9221

Option 1 – Customer Care

Option 2 – Technical

Support

### Europe

Netherlands:

+31 800-0200135

France:

+33 800 901 793

### Europe

Germany:

800 1890272

Other Countries:

+31 13 5835404

### APAC

Shanghai:

+ 86 21 2412 1618/19

Sydney:

+61 2 9751 8500



Our powerful portfolio of brands:

**CADDY**

**ERICO**

**HOFFMAN**

**ILSCO**

**SCHROFF**

**TRACHTE**