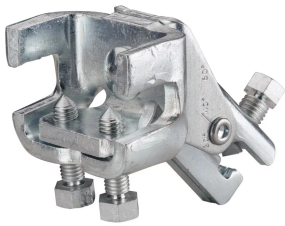


Steel Flange Adapter Assembly

Data Solutions



CERTIFICATIONS



FEATURES

Steel Flange Adapter and Universal Structural Bracket are preassembled, limiting work required in the field

Installs on top or bottom flange of I-beams or bar joists

Low profile easily fits between metal deck and steel structure

Thumb spring retainer allows for ease of positioning

Integrated angle gauge easily displays brace member angle of installation

Snap-off bolt head helps enable easy installation and inspection of seismic sway braces

Works with 1" through 2" brace pipes to reduce inventory

Meets NFPA® 13 as pre-qualified for seismic applications

FM Approved with the following brace members: 1-2 in Sch40 Pipe

FM Specification Tested with the following brace members: 1-2 in Sch40 Pipe

SPECIFICATIONS

Table 1/2

| Catalog Number | Article Number | Material | Finish | Flange Thickness (FT) | Height (H) | Width (W) |
|----------------|----------------|----------|-------------------|-----------------------|------------|-----------|
| CSBS1A | 404505 | Steel | Electrogalvanized | 6 - 19mm | 67mm | 92mm |

Table 2/2

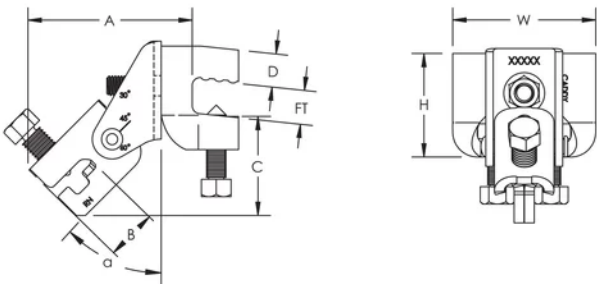
| Catalog Number | Article Number | Angle (a) | A | B | C | D |
|----------------|----------------|-----------|-------|------|------|------|
| CSBS1A | 404505 | 45° | 105mm | 33mm | 65mm | 23mm |

UL Loads

| Part Number | Flange Thickness | Brace Member | Load Rating |
|-------------|------------------|-------------------------|-------------|
| CSBS1A | 6 - 8 mm | DN25 - DN50 Sch. 40 NPS | 6672 N |
| | 8 - 19 mm | | 7561 N |

FM Loads

| Part Number | Horizontal Capacity per Installation Angle from Vertical | | | | | | | |
|-------------|--|----------|----------|----------|-----------------------|----------|----------|----------|
| | Perpendicular to Structure | | | | Parallel to Structure | | | |
| | 30°- 44° | 45°- 59° | 60°- 74° | 75°- 90° | 30°- 44° | 45°- 59° | 60°- 74° | 75°- 90° |
| CSBS1A | 3780 N | 7910 N | 12320 N | 12630 N | 3910 N | 6360 N | 8980 N | 10720 N |

DIAGRAMS**WARNING**

nVent products shall be installed and used only as indicated in nVent's product instruction sheets and training materials. Instruction sheets are available at www.nvent.com and from your nVent customer service representative. Improper installation, misuse, misapplication or other failure to completely follow nVent's instructions and warnings may cause product malfunction, property damage, serious bodily injury and death and/or void your warranty.



Our powerful portfolio of brands:

CADDY ERICO HOFFMAN ILSCO SCHROFF TRACHTE