

U-Channel Cantilever Arm, Perforated with Brace



FEATURES

U-Profile cantilever arm with brace

Perforated/slotted design

SPECIFICATIONS

Finish: Hot-Dip Galvanized

Material: Steel

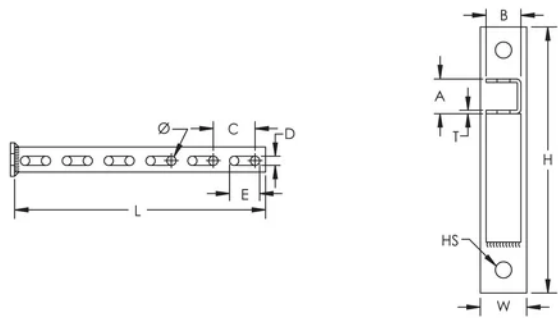
Table 1/1

Catalog Number	Article Number	Length (L)	Height (H)	Width (W)	Hole Size (HS)
CUCS0250HD	312110	250mm	230 mm	40 mm	13 mm
CUCS0300HD	312120	300mm	230 mm	40 mm	13 mm
CUCS0400HD	312140	400mm	230 mm	40 mm	13 mm
CUCS0500HD	312160	500mm	230 mm	40 mm	13 mm
CUCS0600HD	312170	600mm	230 mm	40 mm	13 mm

Catalog Number	Article Number	Length (L)	Height (H)	Width (W)	Hole Size (HS)
CUCS0800HD	312180	800mm	400 mm	40 mm	13 mm
CUCS1000HD	312190	1000mm	400 mm	40 mm	13 mm
CUCS1300HD	312195	1300mm	400 mm	40 mm	13 mm

- Thickness (T): 3 mm
- D: 11 mm
- Diameter (Ø): 11 mm
- A: 30 mm
- B: 30 mm
- E: 36 mm
- C: 50 mm

DIAGRAMS



WARNING

nVent products shall be installed and used only as indicated in nVent's product instruction sheets and training materials. Instruction sheets are available at www.nvent.com and from your nVent customer service representative. Improper installation, misuse, misapplication or other failure to completely follow nVent's instructions and warnings may cause product malfunction, property damage, serious bodily injury and death and/or void your warranty.

North America

+1.800.753.9221

Option 1 – Customer Care

Option 2 – Technical

Support

Europe

Netherlands:

+31 800-0200135

France:

+33 800 901 793

Europe

Germany:

800 1890272

Other Countries:

+31 13 5835404

APAC

Shanghai:

+ 86 21 2412 1618/19

Sydney:

+61 2 9751 8500



Our powerful portfolio of brands:

CADDY

ERICO

HOFFMAN

ILSCO

SCHROFF

TRACHTE

