

Two Hole Flat Bracket



FEATURES

Used to create metal frames with nVent CADDY Eristrut channels

SPECIFICATIONS

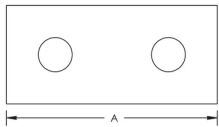
Table 1/2

Catalog Number	Article Number	Material	Finish	A	Hole Size (HS)	Thickness (T)
ZE102	313020	Steel	Hot-Dip Galvanized	83 mm	14	6
ZEA102	387520	Steel	Hot-Dip Galvanized	83 mm	14	6
ZEA102S6	387522	Stainless Steel 316 (EN 1.4401)		83 mm	14	6

Table 2/2

Catalog Number	Article Number	Screw Diameter (Sc)	Screw Length (L)	Screw Included
ZE102	313020	10	25mm	Yes
ZEA102	387520			No
ZEA102S6	387522			No

DIAGRAMS



WARNING

nVent products shall be installed and used only as indicated in nVent's product instruction sheets and training materials. Instruction sheets are available at www.nvent.com and from your nVent customer service representative. Improper installation, misuse, misapplication or other failure to completely follow nVent's instructions and warnings may cause product malfunction, property damage, serious bodily injury and death and/or void your warranty.

North America

+1.800.753.9221
Option 1 – Customer Care
Option 2 – Technical
Support

Europe

Netherlands:
+31 800-0200135
France:
+33 800 901 793

Europe

Germany:
800 1890272
Other Countries:
+31 13 5835404

APAC

Shanghai:
+ 86 21 2412 1618/19
Sydney:
+61 2 9751 8500



Our powerful portfolio of brands:

CADDY ERICO HOFFMAN ILSCO SCHROFF TRACHTE

