

# nVent CADDY Pyramid Equipment Support Kit, 6 Post Base



## CERTIFICATIONS



## FEATURES

Kit includes post-base assemblies, frame and equipment-support clamps

Assembles and adjusts to size and height in minutes by one person with one tool

Innovative crossbar and equipment-support clamps enable quick assembly

Integral foam pad provides gentle interface for all roof types

Hot-dip galvanized and UV stabilized for long lasting performance

Assembled support can be lifted as one unit and easily relocated

## SPECIFICATIONS

Table 1/3

Catalog Number	Article Number	Material	Finish	Temperature	Height (H)	Length (L)
PEK6B	360427	Steel, Polypropylene, Polyethylene	Hot-Dip Galvanized	-34 to 54.4 °C	305 - 457 mm	2172mm

Table 2/3

Catalog Number	Article Number	Post Base (A)	Square Tube (B)	Cross Bar Assembly (C)	Width (W)	Surface Area
PEK6B	360427	314 mm x 6 pc	1981 mm x 2 pc	1232 mm x 4 pc	1588 mm	0.56m <sup>2</sup>

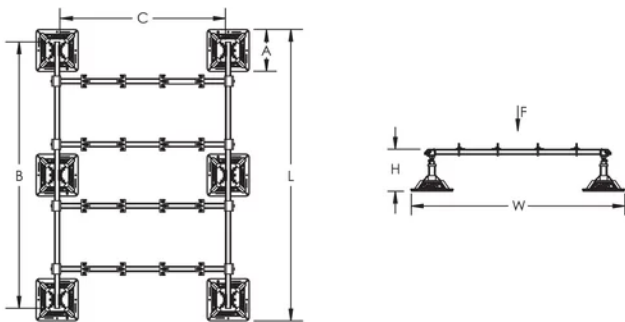
Table 3/3

Catalog Number	Article Number	Unit Weight	Ultimate Static Load (F)	Static Load Safety Factor
PEK6B	360427	56 kg	9960N	3:1

## ADDITIONAL PRODUCT DETAILS

Static load must be stable and uniformly distributed across frame.

## DIAGRAMS



## WARNING

nVent products shall be installed and used only as indicated in nVent's product instruction sheets and training materials. Instruction sheets are available at [www.nvent.com](http://www.nvent.com) and from your nVent customer service representative. Improper installation, misuse, misapplication or other failure to completely follow nVent's instructions and warnings may cause product malfunction, property damage, serious bodily injury and death and/or void your warranty.

#### North America

+1.800.753.9221

Option 1 – Customer Care

Option 2 – Technical

Support

#### Europe

Netherlands:

+31 800-0200135

France:

+33 800 901 793

#### Europe

Germany:

800 1890272

Other Countries:

+31 13 5835404

#### APAC

Shanghai:

+ 86 21 2412 1618/19

Sydney:

+61 2 9751 8500



Our powerful portfolio of brands:

**CADDY**

**ERICO**

**HOFFMAN**

**ILSCO**

**SCHROFF**

**TRACHTE**

