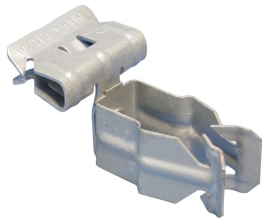


H-PSM Conduit to Flange Clip, Side Mount



FEATURES

Requires only a hammer to install

Available for EMT, rigid and aluminum conduit

Will pivot thru 360°

SPECIFICATIONS

Finish: nVent CADDY Armour

Orientation: Side Mount

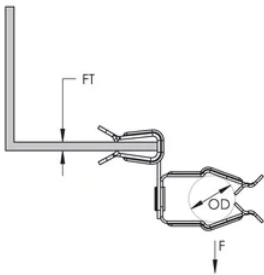
Material: Spring Steel

Table 1/1

Catalog Number	Article Number	Outer Diameter (OD)	Flange Thickness (FT)	Ultimate Static Load (F)
16P4SM	175250	30 - 35 mm	2 - 3 mm	111N
8P4SM	175170	18 - 22 mm	2 - 3 mm	111N
12P24SM	175220	22 - 30 mm	3 - 8 mm	111N
16P24SM	175260	30 - 35 mm	3 - 8 mm	111N
8P24SM	175180	18 - 22 mm	3 - 8 mm	111N

Catalog Number	Article Number	Outer Diameter (OD)	Flange Thickness (FT)	Ultimate Static Load (F)
12P58SM	175230	22 - 30 mm	8 - 14 mm	111N
16P58SM	175270	30 - 35 mm	8 - 14 mm	111N
8P58SM	175190	18 - 22 mm	8 - 14 mm	111N
8P912SM	175200	18 - 22 mm	14 - 20 mm	111N
12P912SM	175240	22 - 30 mm	14 - 20 mm	111N
16P912SM	175280	30 - 35 mm	14 - 20 mm	111N

DIAGRAMS



WARNING

nVent products shall be installed and used only as indicated in nVent's product instruction sheets and training materials. Instruction sheets are available at www.nvent.com and from your nVent customer service representative. Improper installation, misuse, misapplication or other failure to completely follow nVent's instructions and warnings may cause product malfunction, property damage, serious bodily injury and death and/or void your warranty.

North America

+1.800.753.9221

Option 1 – Customer Care

Option 2 – Technical

Support

Europe

Netherlands:

+31 800-0200135

France:

+33 800 901 793

Europe

Germany:

800 1890272

Other Countries:

+31 13 5835404

APAC

Shanghai:

+ 86 21 2412 1618/19

Sydney:

+61 2 9751 8500



Our powerful portfolio of brands:

CADDY

ERICO

HOFFMAN

ILSCO

SCHROFF

TRACHTE

