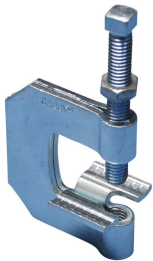


C-Clamp for Strut and Rod



CERTIFICATIONS



FEATURES

Dual purpose beam clamp for rod and strut

Conforms with Federal Specification WW-H-171 (Type 23), Manufacturers Standardization Society ANSI®/MSS-SP-58 (Type 23)

SPECIFICATIONS

Finish: Pregalvanized

Material: Steel

Table 1/1

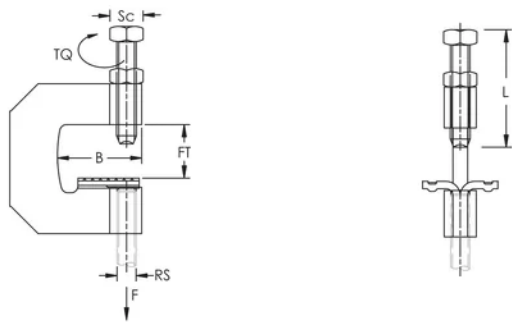
Catalog Number	Flange Thickness (FT)	B	Screw Length (L)	Torque (TQ)	Static Load	Certifications
200RS375	15.9 mm Max	38.1 mm	76.2mm	6.78 N·m	1100N	UL, cUL
200RS500	15.9 mm Max	38.1 mm	76.2mm	14.9 N·m	1600N	

ADDITIONAL PRODUCT DETAILS

Setscrew must be tightened and torqued onto the sloped side of the I-beam.

Load rating is per fastener with a 3X safety factor. Actual installation must be evaluated to determine load on the individual fastener.

DIAGRAMS



WARNING

nVent products shall be installed and used only as indicated in nVent's product instruction sheets and training materials. Instruction sheets are available at www.nvent.com and from your nVent customer service representative. Improper installation, misuse, misapplication or other failure to completely follow nVent's instructions and warnings may cause product malfunction, property damage, serious bodily injury and death and/or void your warranty.

North America

+1.800.753.9221
Option 1 – Customer Care
Option 2 – Technical
Support

Europe

Netherlands:
+31 800-0200135
France:
+33 800 901 793

Europe

Germany:
800 1890272
Other Countries:
+31 13 5835404

APAC

Shanghai:
+ 86 21 2412 1618/19
Sydney:
+61 2 9751 8500



Our powerful portfolio of brands:

CADDY ERICO HOFFMAN ILSCO SCHROFF TRACHTE

