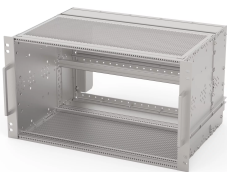


EuropacPRO 19" Subrack Kit for Railway, Shielded, SNCF

Energieversorger

Subrack for Railway applications, conform to SNCF Standard.



ZERTIFIZIERUNGEN



EIGENSCHAFTEN

SNCF listed, EuropacPRO-fer, tested to NF F 61-005 and NF F 60-002

The 19" bracket is firmly fixed to the side panel (tox-cold welded) and is especially suited for high mechanical stresses (vibration resistance)

Lateral support bars to NFF standard facilitate insertion of subrack into the (cabinet) frame. The double 19" screwing position adds to additionally safety (NFF standard)

IP 20, in accordance with IEC 60529

EMC of approximately 40 dB at 1 GHz, 30 dB at 2 GHz, assuming that the front is covered with shielded front panels, testing in accordance with VG 95373 part 15

Aluminum construction

Modifications such as cutouts, different finishes or dimensions available

Supplied as space-saving flat-pack

SPEZIFIKATIONEN

Table 1/3

Katalognummer	Rack Height	Rack Width	Package Quantity	For Mounting	Board Depth	EMC Gasket Type
21500-028	6 U	84 HP	1	Backplane	220 mm	Textile
21500-030	3 U	84 HP	1	Backplane	220 mm	Textile
21500-068	3 U	36 HP	1	Backplane	220 mm	Textile
21500-071	6 U	36 HP	1	Backplane	220 mm	Textile

Table 2/3

Katalognummer	Shock and Vibration Tolerance	Handle Included	Montage	Konform mit	Tiefe	EMC Shielding
21500-028	5 g (force)	Ja	Rack	IEC 60297-3-103, SNCF NFF 61005, SNCF NFF 60002	320 mm	Ja
21500-030	5 g (force)	Ja	Rack	IEC 60297-3-103, SNCF NFF 61005, SNCF NFF 60002	320 mm	Ja
21500-068	5 g (force)	Ja	Rack	IEC 60297-3-103, SNCF NFF 61005, SNCF NFF 60002	320 mm	Ja
21500-071	5 g (force)	Ja	Rack	IEC 60297-3-103, SNCF NFF 61005, SNCF NFF 60002	320 mm	Ja

Table 3/3

Katalognummer	Product Type	Statische Last	Zertifizierungen
21500-028	Subrack/Chassis	15 kgf	RoHS, SNCF
21500-030	Subrack/Chassis	15 kgf	RoHS, SNCF
21500-068	Subrack/Chassis	15 kgf	RoHS

Katalognummer	Product Type	Statische Last	Zertifizierungen
21500-071	Subrack/Chassis	15 kgf	RoHS

ADDITIONAL PRODUCT DETAILS

Fer = ferroviaire = French Railways, 1 T = 4 HP = 20.32 mm.

Receptacle/mounting frame for subracks, stainless steel, 9 T or 21 T on request.

Individual configuration: broad range of variants in height, width and depth; guide rails for a wide variety of applications; interior options; accessories and mounting material.

WARNUNG

nVent-Produkte müssen in Übereinstimmung mit den Produktinformationsblättern und dem Schulungsmaterial von nVent installiert und verwendet werden. Informationsblätter sind verfügbar unter www.nVent.com sowie bei Ihrem nVent-Kundendienstvertreter. Unsachgemäße Installation, Missbrauch, Fehlanwendung oder andere Handlungen im Widerspruch zu den Anweisungen und Warnungen von nVent können zu Fehlfunktionen, Anlagenschäden, schwerer Körperverletzung sowie zum Tod führen und/oder haben die Annullierung der Garantie zur Folge.



Our powerful portfolio of brands:

CADDY ERICO HOFFMAN ILSCO SCHROFF TRACHTE