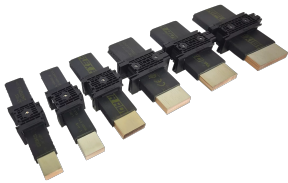


# nVent ERIFLEX IFBS Support Kit for Flexibar and IBSB Advanced



nVent ERIFLEX IBSB and Flexibar Advanced Bracing System (IFBS) has been designed for the nVent ERIFLEX Flexibar Advanced and IBSB braided conductors range. The IFBS is an economic solution to hold and fasten Flexibar and IBSB conductors between two pieces of electrical equipment. This compact fastening solution offers adjustable, low center distance between phases for easy and tidy alignment on Molded Case Circuit Breakers (MCCB) or other compact electrical devices. The IFBS Support Kit can be mounted on an enclosure back plate or a C-shaped profile. Due to its versatile nature, the conductors can be mounted side-by-side or on top, with one or more conductors per phase, making the IFBS quick and easy to install. Additionally, IFBS offers safe and reliable protection through its IEC® 61439-1 certification and composition of low smoke, halogen free, flame retardant materials that are naturally resistant against high temperatures.

## CERTIFICERINGER



## FUNKTIONER

Suitable for nVent ERIFLEX Flexibar and IBSB braided conductors from 20 to 63mm in width and all conductors sizes (100A to 1600A)

Solution with small form factor offering a clean setup between phases for easy alignment on MCCB's or other compact electrical devices

Conductor compression system designed to adapt to any conductor depth, up to ten layers of nVent ERIFLEX Flexibar Advanced

Optional nVent ERIFLEX IFBS Reinforcement Kit for High Short-Circuit available for situations needing to withstand high short-circuit values up to 130kA peak

IEC® 61439-1 certified and RoHS compliant

Kit includes 12 retaining blocks

## SPECIFIKATIONER

**Complies With:** IEC® 60695-2-11 (Glow Wire Test 960 °C); IEC® 61439.1  
**Flammability Rating:** UL® 94V-0  
**Working Temperature:** -40 to 130 °C

Table 1/3

Katalognummer	Artikelnummer	Materiale	Conductor Width	Conductor Thickness	Conductor Type	A
IFBS20	553591	Stål, Glass Fibre Reinforced Polyamide	20 mm	2 - 10 mm	Flexibar, IBSB Advanced 25, 50, 70 mm <sup>2</sup>	5 - 16 mm
IFBS24	553592	Stål, Glass Fibre Reinforced Polyamide	24 mm	2 - 10 mm	Flexibar, IBSB Advanced 100 mm <sup>2</sup>	5 - 16 mm
IFBS32	553593	Stål, Glass Fibre Reinforced Polyamide	32 mm	2 - 10 mm	Flexibar, IBSB Advanced 120, 185, 240 mm <sup>2</sup>	5 - 16 mm
IFBS40	553594	Stål, Glass Fibre Reinforced Polyamide	40 mm	2 - 10 mm	Flexibar	5 - 16 mm
IFBS50	553595	Stål, Glass Fibre Reinforced Polyamide	50 mm	2 - 10 mm	Flexibar	5 - 16 mm
IFBS63	553596	Stål, Glass Fibre Reinforced Polyamide	63 mm	2 - 10 mm	Flexibar	5 - 16 mm

Table 2/3

Katalognummer	Artikelnummer	B	C	D	Height (H)	Length (L)
IFBS20	553591	27 mm	20 mm	36 mm	30 mm	40mm
IFBS24	553592	31 mm	20 mm	40 mm	30 mm	40mm
IFBS32	553593	39 mm	20 mm	48 mm	30 mm	40mm
IFBS40	553594	47 mm	20 mm	73 mm	30 mm	40mm
IFBS50	553595	57 mm	20 mm	83 mm	30 mm	40mm
IFBS63	553596	70 mm	20 mm	96 mm	30 mm	40mm

Table 3/3

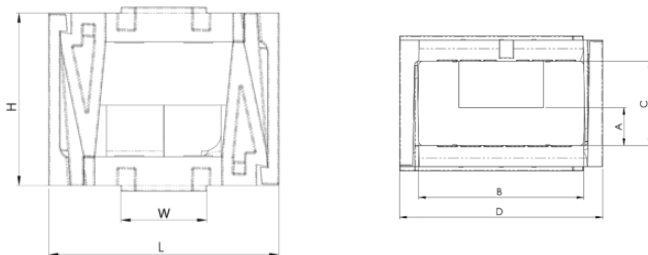
Katalognummer	Artikelnummer	Width (W)	Unit Weight
IFBS20	553591	15 mm	0.058 kg
IFBS24	553592	15 mm	0.059 kg
IFBS32	553593	15 mm	0.063 kg
IFBS40	553594	15 mm	0.103 kg
IFBS50	553595	15 mm	0.108 kg
IFBS63	553596	15 mm	0.118 kg

## YDERLIGERE PRODUKTOPLYSNINGER

Recommended distance between support blocks is 400mm (15 3/4")

The nVent ERIFLEX IFBS Support Kit can only be used with nVent ERIFLEX Flexibar and IBSB braided conductors. Compatibility with other solutions has not been tested.

## DIAGRAMS



## ADVARSEL

nVent-produkter skal kun installeres og anvendes som angivet i nVents produktvejledninger og træningsmaterialer. Vejledninger er tilgængelige på [www.nvent.com](http://www.nvent.com) og hos din nVent kundeservicerepræsentant. Forkert installation, misbrug, fejlanvendelse eller anden undladelse af fuldt ud at følge nVents instruktioner og advarsler kan medføre funktionsfejl, materielle skader, alvorlige personskader eller død og/eller ugyldiggøre din garanti.

#### North America

+1.800.753.9221

Option 1 – Customer Care

Option 2 – Technical

Support

#### Europe

Netherlands:

+31 800-0200135

France:

+33 800 901 793

#### Europe

Germany:

800 1890272

Other Countries:

+31 13 5835404

#### APAC

Shanghai:

+ 86 21 2412 1618/19

Sydney:

+61 2 9751 8500



Vores kraftfulde portefølje af mærker:

**CADDY**

**ERICO**

**HOFFMAN**

**ILSCO**

**SCHROFF**

**TRACHTE**