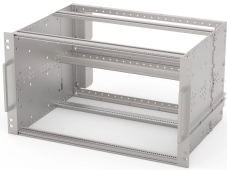


# EuropacPRO 19" Subrack Kit for Railway, Retrofit Shielding, SNCF

Subrack for Railway applications, conform to SNCF Standard, non-shielded versions.



## CERTIFICATIONS



## VLASTNOSTI

SNCF listed, EuropacPRO-fer, tested to NF F 61-005 and NF F 60-002

The 19" bracket is firmly fixed to the side panel (tox-cold welded) and is especially suited for high mechanical stresses (vibration resistance)

Lateral support bars to NFF standard facilitate insertion of subrack into the (cabinet) frame. The double 19" screwing position adds to additionally safety (NFF standard)

IP 20, in accordance with IEC 60529

Modifications such as cutouts, different finishes or dimensions available

Supplied as space-saving flat-pack

Aluminum construction

Horizontal rail type "Heavy"

## SPECIFIKACE

<b>Static Load:</b>	15kg
<b>Materiál:</b>	Hliník
<b>Povrchová úprava:</b>	Anodized; Passivated

**Complies With:** IEC 60297-3-103; SNCF NFF 61005; SNCF NFF 60002

**EMC Shielding:** No

**Product Type:** Subrack/Chassis

Table 1/2

Katalogové číslo	Rack Height	Rack Width	Hloubka	Množství v balení	For Mounting	Board Depth
21500-070	6U	36HP	320mm	1	Backplane	220mm
21500-027	6U	84HP	320mm	1	Backplane	220mm
21500-067	3U	36HP	320mm	1	Backplane	220mm
21500-029	3U	84HP	320mm	1	Backplane	220mm

Table 2/2

Katalogové číslo	Gasket Type	Shock and Vibration Tolerance	Rukojeť v ceně	Mounting	Certifications	Rychlé odeslání
21500-070	Textile EMC	5g (force)	Yes	Rack	RoHS	Ne
21500-027	Textile EMC	5g (force)	Yes	Rack	RoHS, SNCF	Ne
21500-067	Textile EMC	5g (force)	Yes	Rack	RoHS	Ne
21500-029	Textile EMC	5g (force)	Yes	Rack	RoHS, SNCF	Ne

## DALŠÍ PODROBNOSTI O PRODUKTU

Test reports are available online.

Fer = ferroviaire = French Railways, 1 T = 4 HP = 20.32 mm Receptacle/mounting frame for subracks, stainless steel, 9 T or 21 T on request.

Receptacle/mounting frame for subracks, stainless steel, 9 T or 21 T on request.

Individual configuration: broad range of variants in height, width and depth; guide rails for a wide variety of applications; interior options; accessories and mounting material.

## UPOZORNĚNÍ

Produkty nVent musí být instalovány a používány pouze tak, jak je uvedeno v instrukčních listech a materiálech pro školení nVent. Instrukční listy jsou k dispozici na [www.nvent.com](http://www.nvent.com) a od vašeho zástupce zákaznického servisu nVent. Nesprávná

instalace, zneužití, nesprávné použití nebo jiný nedostatek úplného dodržování pokynů a varování nVent může způsobit selhání produktu, poškození majetku, vážné zranění osob a smrt a/nebo zrušit vaši záruku.

#### North America

All locations  
+1.763.422.2661  
Chat with us:  
[nvent.com/schroff](https://nvent.com/schroff)

#### Europe

Straubenhardt, Germany  
+49.7082.794.0  
Betschdorf, France  
+33.3.88.90.64.90  
Warsaw, Poland  
+48.22.209.98.35  
Assago, Italy  
+39.02.932.7141  
Chat with us:  
[nvent.com/schroff](https://nvent.com/schroff)

#### Asia

Shanghai, China  
+86.21.2412.6943  
Qingdao, China  
+86.532.8771.6101  
Singapore  
+65.6768.5800  
Shin-Yokohama, Japan  
+81.45.476.0271  
Chat with us:  
[nvent.com/schroff](https://nvent.com/schroff)

#### Middle East & India

Dubai, United Arab Emirates  
+971.4.378.1700  
Bangalore, India  
+91.80.6715.2001  
Istanbul, Turkey  
+90.216.250.7374  
Chat with us:  
[nvent.com/schroff](https://nvent.com/schroff)



Naše portfolio silných značek:

**CADDY ERICO HOFFMAN ILSCO SCHROFF TRACHTE**